

STPI - Mohali - “Incubation Center”

STPI - Mohali will broadly provide following services to promote IT/ITeS industry in the region:-

- Statutory Services
- Incubation Services
- Co-Location Services
- Data Communication Services
- Value added services

1. State of the art Incubation Facility at STPI – Mohali



Following facilities may be availed at STPI Mohali Center:-

- Fully furnished office Space and Raw Space (as per requirement)
- High speed Internet connectivity
- Multiple conference rooms
- 160 racks Data Centre with Tier III Standard
- Auditorium
- Reception
- Security
- Parking
- Cafeteria

2. Tariff for Incubation Facility at STPI Mohali

A. PNP Incubation Facility Available

STPI Mohali has fully furnished Plug and play Incubation space of around 11,000 Sq. Ft. for approx. 100 seats are available on second floor.



Second Floor Plan

Sl. No.	Studio No.	No. of Seats	Facility Available
1	Studio 1	6	5-seater with One Manager Seat & One Meeting Table
2	Studio 2	10	9-seater with One Manager Seat & One Meeting Table
3	Studio 3	10	9-seater with One Manager Seat & One Meeting Table
4	Studio 4	16	15-seater with One Manager Seat & One Meeting Table
5	Studio 5	16	15-seater with One Manager Seat & One Meeting Table
6	Studio 6	16	15-seater with One Manager Seat & One Meeting Table
7	Studio 7	13	12-seater with One Manager Seat & One Meeting Table
8	Studio 8	13	12-seater with One Manager Seat & One Meeting Table

A. Commercial Details

Sl. No.	Type of Incubation Area	Details	Monthly Rental
1	Plug N Play with free Wifi Access	For 12 Hrs	Rs. 6,000/- Per Seat
2	Plug N Play with free Wifi Access	For 24 Hrs	Rs. 8,000/- Per Seat

B. Security Deposit Details

Sl. No.	Description
1	Security Deposit for Incubation Space: Equivalent to three months' rent per PNP seat

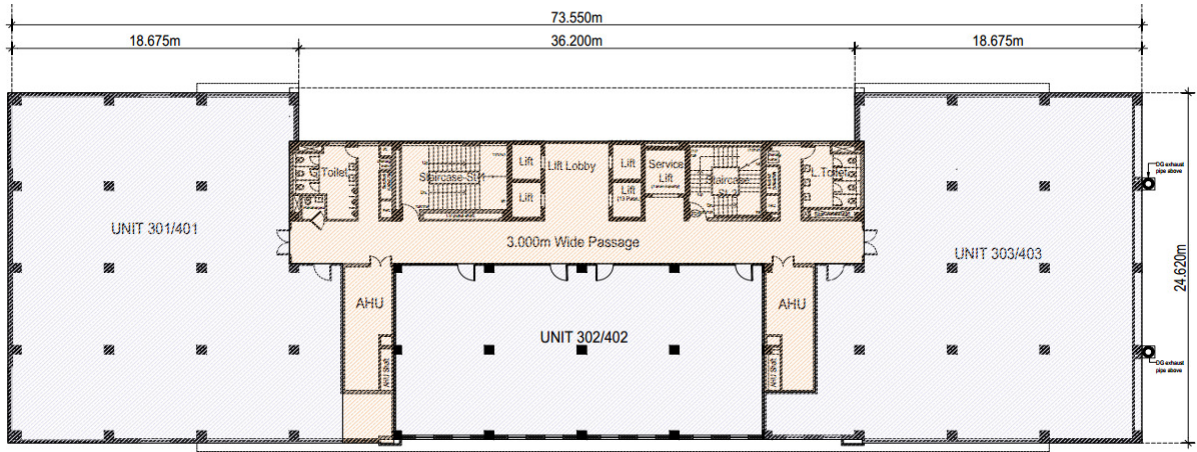
C. Bandwidth Charges: Extra as per tariff.

D. Other consumable(s) – as per actual

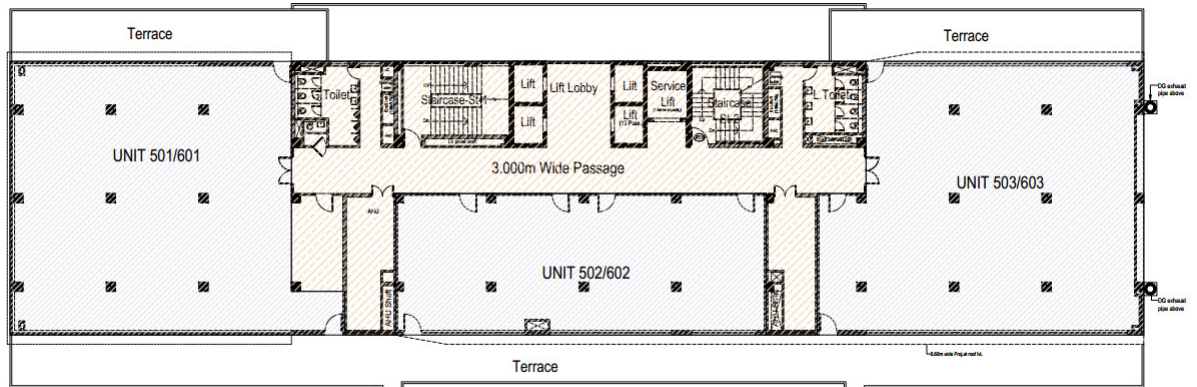
E. Service Tax extra as applicable

B. Raw Space & Semi-Furnished Space Incubation Facility Available

STPI Mohali has approx. 56,836 Sq. Ft Space from 3rd to 6th floor is available for startups to start their business. Out of 53,836 Sq. Ft., 28,418 Sq. Ft. space are semi-furnished Space & remaining 28,418 Sq. Ft. are Raw Space for entrepreneurs to start their business as per their own modified office design.



Third & Fourth Floor Plan



Fifth & Sixth Floor Plan

A. Commercial Details

Sl. No.	Type of Incubation Area	Monthly Tariff	Monthly Maintenance Charges	Fixed Power Back Up	Monthly Tariff for Power back Up
1	Raw Space	Rs. 26/- per Sq. Ft.	Rs. 10/- per Sq. Ft.	DG	Rs. 550/- Per KVA per Month
				UPS	Not Provided
				Running Charges (Raw/Back Up/UPS)	As per Actual Usage recorded in sub meter
2.	Semi-Furnished Space (Raw space with Flooring, AC ducting & false ceiling + lighting but without furniture).	Rs. 40/- per Sq. Ft.	Rs. 10/- per Sq. Ft.	DG	Rs. 550/- Per KVA per Month
				UPS	Not Provided
				Running Charges (Raw/Back Up/UPS)	As per Actual Usage recorded in sub meter

B. Security Deposit Details

Sl. No.	Description
1	Security Deposit for Incubation Space: Equivalent to three months' rent
2	Security Deposit for Maintenance: Equivalent to three months' rent
3	Security Deposit for Power back up: Equivalent to three months' Fixed Back Up Charges

C. Bandwidth Charges: Extra as per tariff.

D. Other consumable(s) – as per actual

E. Service Tax extra as applicable

A. Other Facilities

Sl. No.	Description	Tariff
1	18 Seater Conference Room 2 nd Floor	Rs. 500/- Per Hour
2	8 Seater Conference Room 2 nd Floor	Rs. 250/- Per Hour
3	18 Seater Conference Room at 7 th Floor	Rs. 500/- Per Hour
4	One Auditorium 127 Seater at 7 th Floor	Rs. 1500/- Per Hour (Max. Rs. 15,000/- for a day)

3. General Terms & Conditions (for PNP/Raw space)

A. Contract Period Duration: **11 months**

B. Lock In Period: **06 Months**

C. Payment Terms: One Month advance cheque / DD and subsequent advance monthly payment before 7th of each calendar month.

D. Termination: One Month advance notice period

E. Extension: Two Months advance request

4. Eligibility criteria for Allotment of incubation facilities

Proposal from prospective Incubatees shall be analyzed considering various parameters as detailed below. The analyzed proposal shall be placed before the advisory board who shall thereafter decide to offer the space to the company /individual etc. The advisory board will examine the proposal based on various parameters like number of employees, total cost of the proposal (Turnover in Rs. Lakhs), Percentage of R&D component etc.

An indicative marking methodology is shown below:

S. No	Description	Marks		Remark
1	Type of company	Start-up	10	Start-up, multi-locational, older than three years etc.
		Less than 3 years old	5	
		More than 3 years old	2	
2	Location(s)	Single	10	Multi-locational or uni-locational incubatee company.
		> 3 but < 5	5	
		> 5	2	
3	Product or service to be developed	R&D	10	R&D shall be given priority.
		Product	5	
		Service	2	
4	Employment generation	> 25	10	Employment generated by incubatee.
		> 15 but < 25	5	
		< 15	2	

Incubation seats shall be allotted on first come first serve basis subject to fulfilling the eligibility criteria, assessment of Advisory Board and availability of seats.

Benefits / Discounts for Incubatees:

1. Incubatee companies involved in Product Development or R&D shall be provided rental discount of 40% in 1st year, 25% in 2nd year & 15% in 3rd year.
2. Incubatee companies NOT involved in Product Development or R&D shall be provided rental discount of 20% in 1st year, 15% in 2nd year & 10% in 3rd year.
3. Incubatee companies led by SC/ST entrepreneurs involved in Product Development or R&D shall be provided rental discount of 50% in 1st year, 35% in 2nd year & 25% in 3rd year.
4. Incubatee companies led by SC/ST entrepreneurs NOT involved in Product Development or R&D shall be provided rental discount of 40% in 1st year, 25% in 2nd year & 15% in 3rd year.
5. Following Additional Discount over and above the existing discounts shall be provided: -

(a) For Women Led Entrepreneurs (In case of Non individual enterprises at least 51% of the shareholding and controlling share should be held by women entrepreneur) :- Additional Discount of 5%.

(b) For Divyang-Jan Led Entrepreneurs (In case of Non individual enterprises at least 51% of the shareholding and controlling share should be held by Divyang-Jan Led Entrepreneur) :- Additional Discount of 5%.

5. Address of STPI Mohali:

Plot No. C-184, Industrial Area, Phase-8A
Sector-75, Mohali (S.A.S. Nagar)
Pin-160055

6. Interested companies working in IT/ITeS sector may contact (Escalation matrix) :-

Level 1	STPI Mohali Tel: 0172-2237067 Fax: 0172-2237066 Email: mohali.incubation@stpi.in ;
Level 2	Sh. Nitin Kr. Agrawal, Joint Director, Mobile: 9041014767 Email: nitin.agrawal@stpi.in ;
Level 3	Sh. Alok Goel, Additional Director Mobile: 9810637404 Email: alok.goel@stpi.in ;
Level 4	Sh. Ajay P. Shrivastava, Centre Head, Office-In-Charge Mobile: 9914417457 Email: ajay.shrivastava@stpi.in ;

Actual picture of Incubation Space, STPI- Mohali





